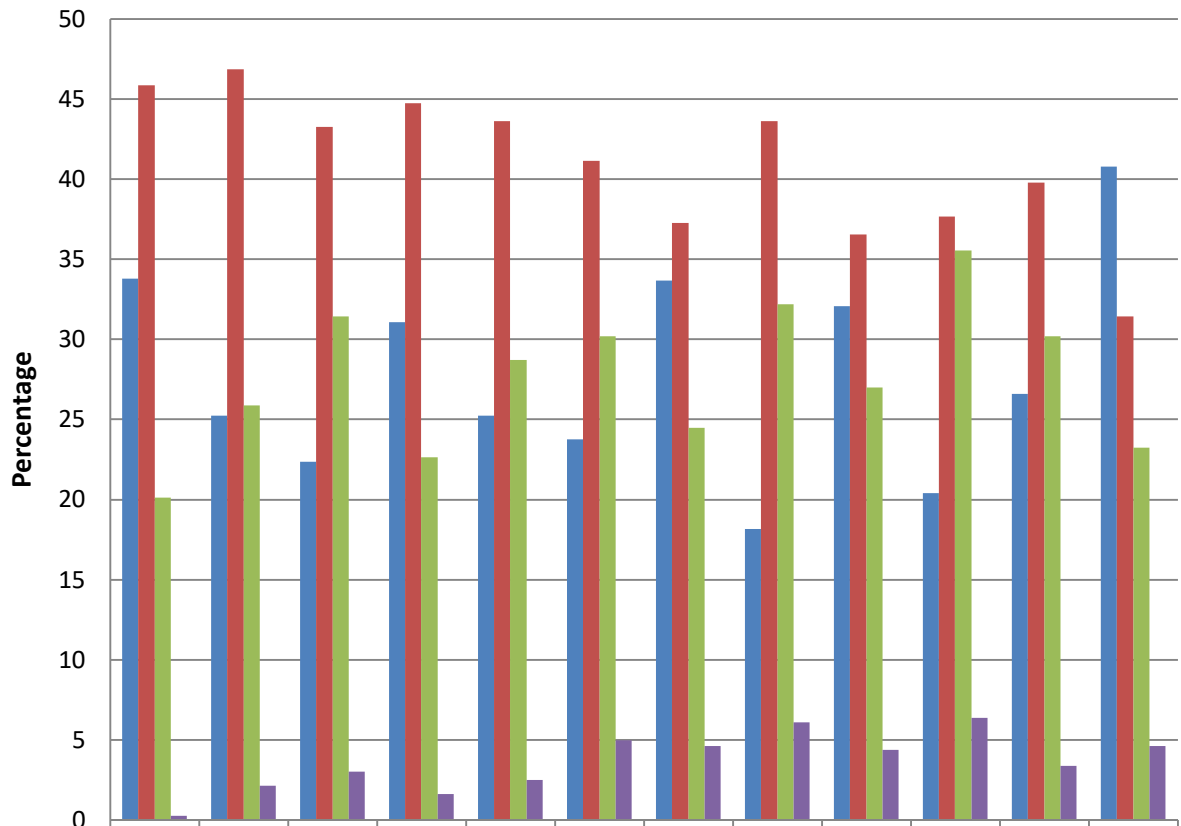


# IQAC

## CARMEL COLLEGE, MALA

### Students Feedback on Overall Performance of the College 2019-2020



Performance Level	Quality of teaching	Syllabus coverage in the class	Use of innovative teaching methods	Evaluation of students through exams, seminar etc	Shares the evaluated answer scripts to students	Proper revision is done	Internal marks are published before uploading	Promotion of experimental learning	Teachers identifies the strength and weakness of students	Mentoring help in reduce in stress related issues	institutional inculcate human values communication skills	library facilities support teaching learning processes
Excellent	33.79	25.22	22.36	31.06	25.22	23.73	33.66	18.14	32.05	20.37	26.58	40.75
Very good	45.84	46.83	43.23	44.72	43.6	41.12	37.27	43.6	36.52	37.64	39.75	31.43
Good	20.12	25.84	31.43	22.61	28.7	30.19	24.47	32.17	26.96	35.53	30.19	23.23
Poor	0.25	2.11	2.98	1.61	2.48	4.97	4.6	6.09	4.35	6.34	3.35	4.6